

CEN CSN Conference
'Construction Standards: 2010 – 2015'



→ **CEN report on Global relevance of standards and other high level initiatives**

Ruggero Lensi

UNI Member of CEN/BT

Milano, 14 May 2009

EU: standards driven society



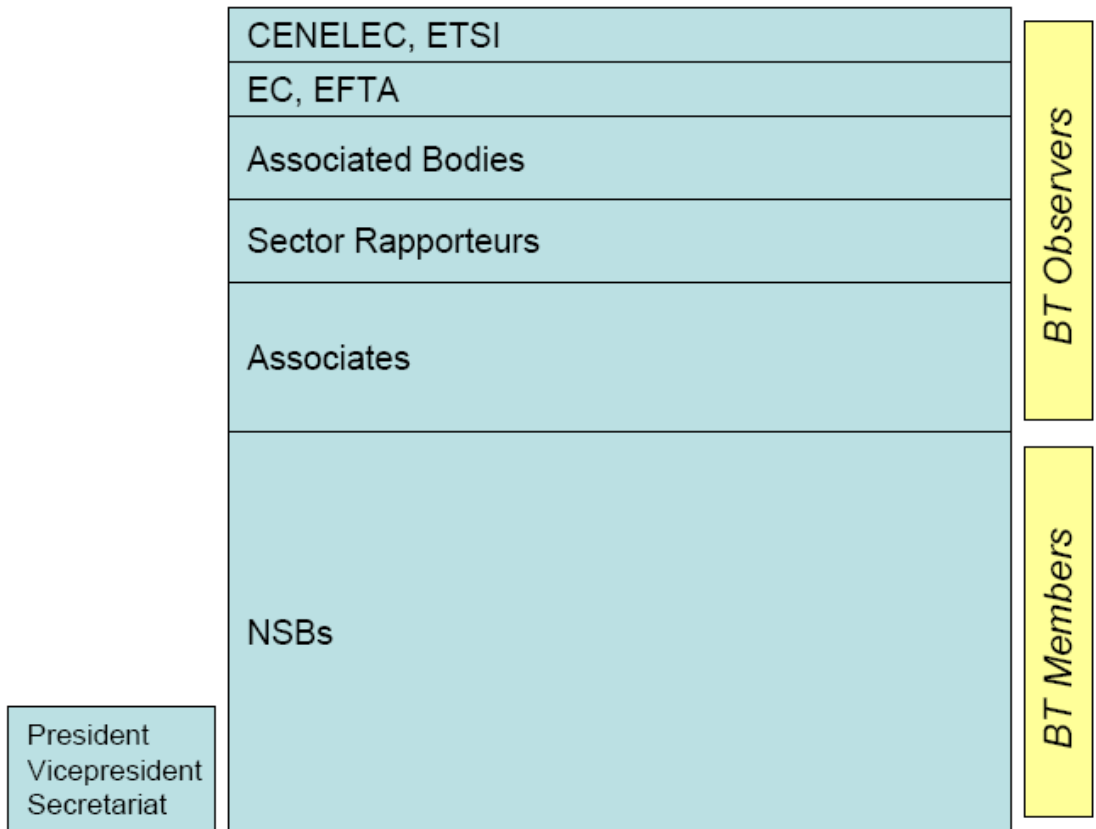
The advertisement features a dark blue background. On the left, a white electrical plug with a star-shaped hole is shown. In the center, a white square wall socket with a star-shaped hole is shown. On the right, a white electrical plug with multiple pins is shown. In the top right corner, there is a logo for the European Parliament (PARLEMENT EUROPÉEN) with the text '7 juin 2009' above it. In the bottom right corner, there is a yellow star logo with the text 'Elections européennes A VOUS DE CHOISIR !' and '7 juin 2009' above it.

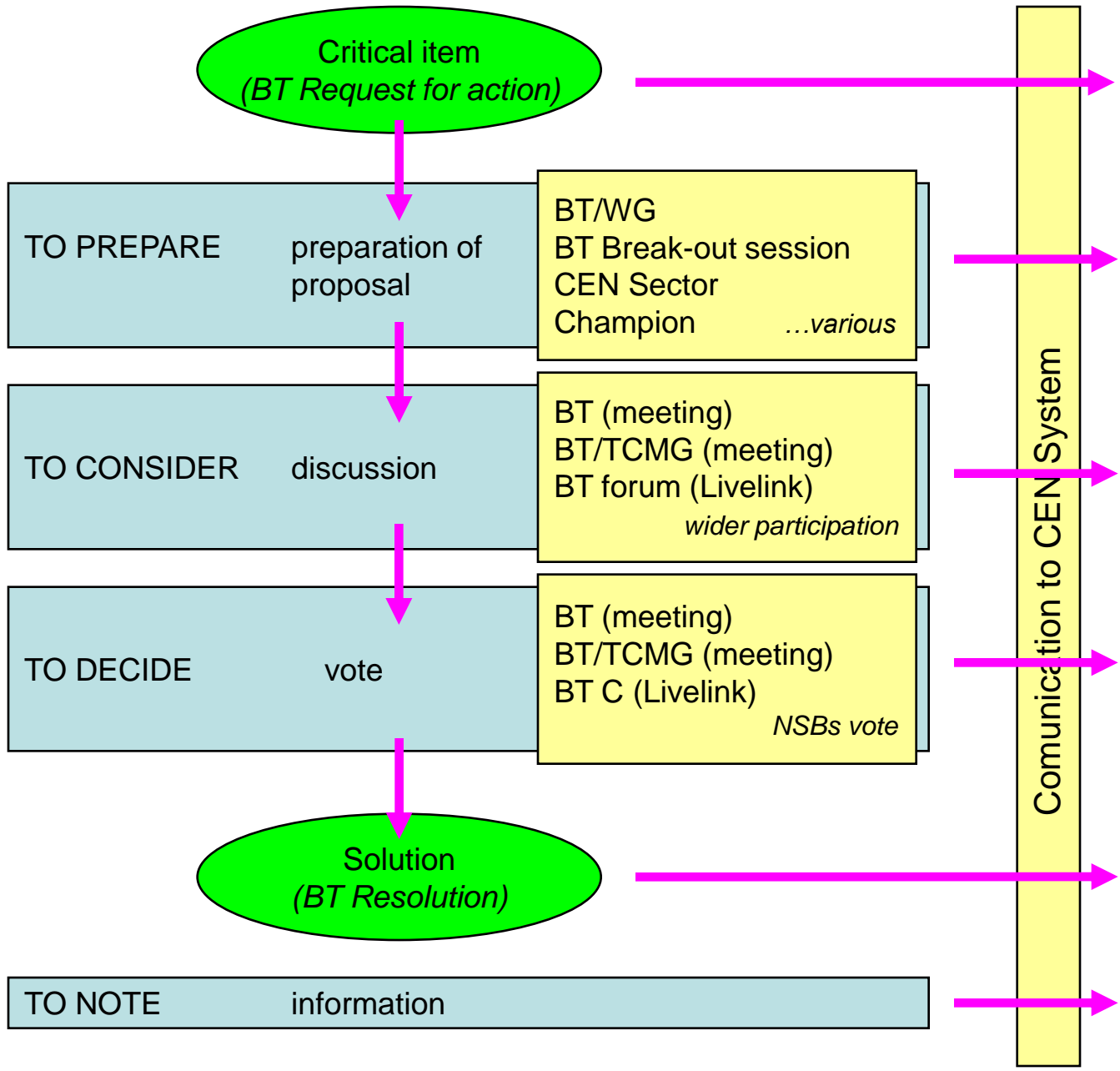
Jusqu'où doit-on standardiser ?
Votre vote, utilisez-le lors des élections du Parlement européen le **7 juin**.

www.elections2009.eu

7 juin 2009
Elections européennes
A VOUS DE CHOISIR !

CEN/BT Composition





EN ISO standards in Construction



I.C.S. Construction Field

91 CONSTRUCTION MATERIALS AND BUILDING

93 CIVIL ENGINEERING

13.220 Protection against fire

81.040.20 Glass in building

01.040.91 Construction materials and building (Vocabularies)

Total % of EN ISO standard in CEN catalogue

25,75 %

Construction % of EN ISO standard in Construction CEN catalogue

6,63 %

ISO Global Relevance Policy



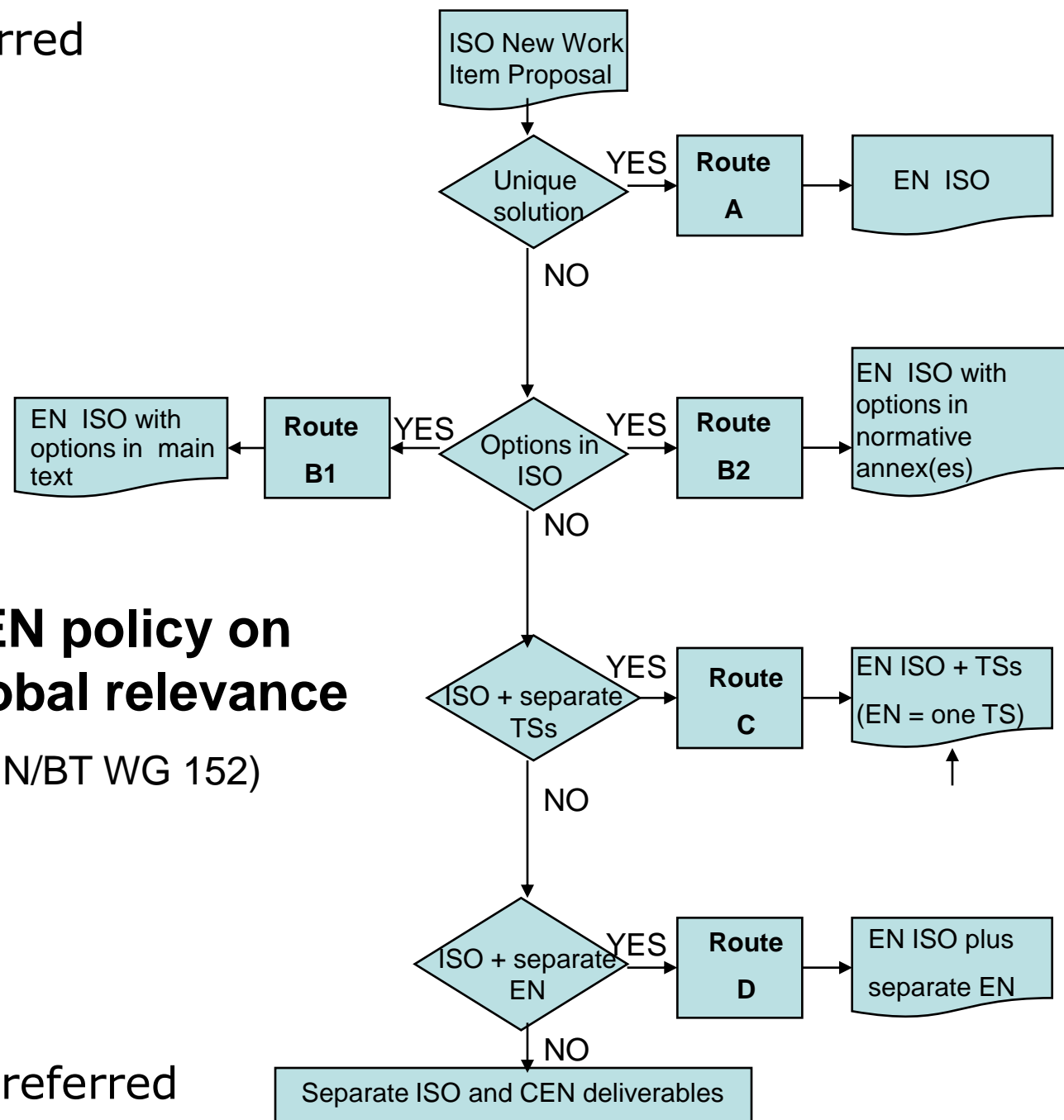
“The required characteristic of an International Standard so that it can be used/implemented as broadly as possible by affected industries and other stakeholders in markets around the world”.

Hence an ISO standard must accommodate the needs of all regions wanting to participate in the development of the standard, including Europe.

In cases where unique international solutions are not possible due to legitimate market differences, ISO has introduced the concept of ‘options’ to facilitate global harmonization.



Preferred



CEN policy on global relevance

(CEN/BT WG 152)

Not preferred

CEN Sectors and horizontal aspects



TCs Production monitoring

CEN/BT WG 102 “Construction”
(CEN/BT WG 195 “Revised Machinery Directive”)

Requirements

CEN/TC 127 “Fire safety”
CEN/BT WG 206 “Lead market initiative on sustainable construction”
CEN/BT WG 207 “Accessibility in built environment”

Mega-fields

CEN/BT WG 163 “Standardization in the field of services”
CEN/BT WG 195 “Qualification of professions/personnel”

Standards drafting

CEN EHD “Environment help desk”
CEN Guide 6 “Need of older persons and persons with disabilities”
CEN/TB WG 208 “Guidance for SME”

Questions .. ? ...

and ... hopefully ...

Answers

Grazie...

A handwritten signature in black ink, appearing to be 'P. H. H.', is written to the right of the word 'Grazie...'. The signature is stylized and cursive.